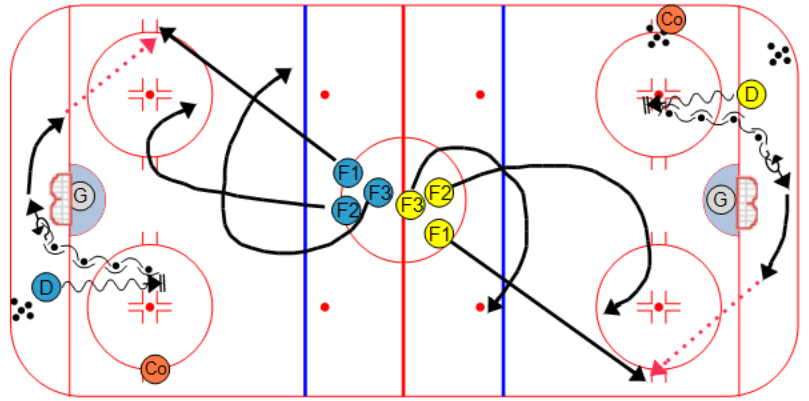


Description

Drill starts on the whistle.
 D skates to the dot, then backward behind the net.
 F1 gets to the hash mark
 F2 supports puck
 F3 slashes across for secondary support
 D makes breakout pass to F1
 F1, F2 and F3 move up ice 3 on 0 for a shot
 D follows the play to the far blue line and receives a pass from the coach
 D takes low hard shot at net with F1, F2 and F3 looking for the rebound



Key Points :

Breakout

Support

Slash

Shot/Rush