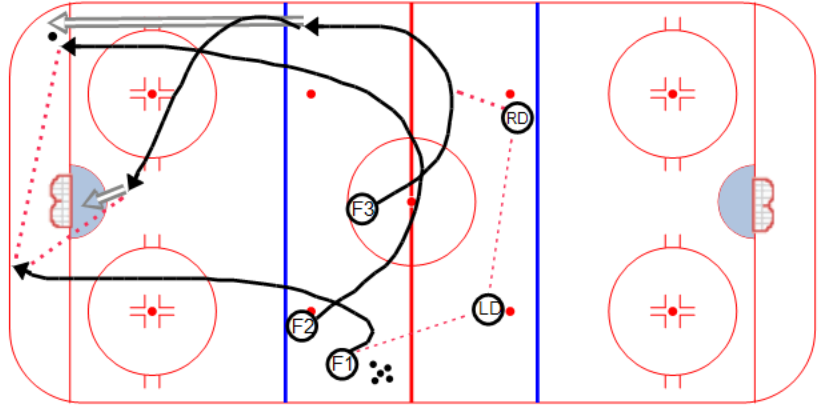


**Description**

- 1- F1 passes to LD
- 2- F1, F2 & F3 skate while LD & RD go D2D
- 3- RD hits F3 with regroup pass in the neutral zone
- 4- F3 dumps puck into the corner (Make sure it's soft enough to stay in the corner).
- 5- F2 goes hard to the corner to get the puck
- 6- F1 goes to the back of the net to receive a pass from F2
- 7- F3 skates hard to the front of the net for a one-timer from F1

**Key points :**

Crisp Passing

Timing

Hard to the Net