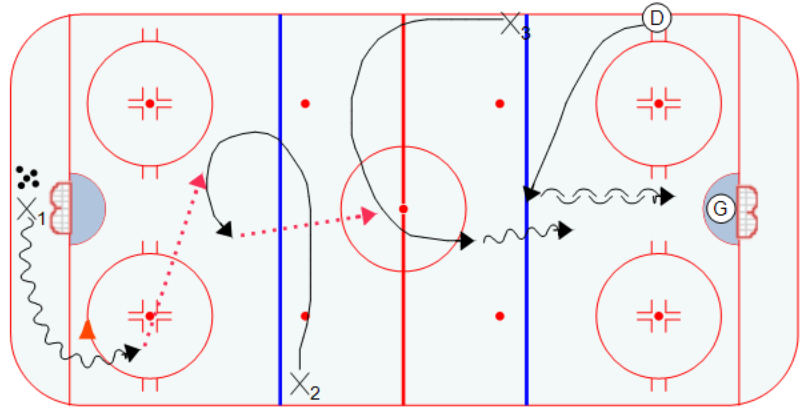


**Description**

Line up players as shown

X1 comes out and hits X2 with a pass  
X2 looks up and finds X3 in the middle of the ice  
and makes a good hard pass  
X3 goes 1 x 1 against D

Once X3 receives his pass the drill starts again.  
Players must skate hard to their next station. All  
the players on the ice will cause confusion and  
force the passers to concentrate on their pass.



**Key Points :**