

Title : 1 on 1 Center Ice Angle Drill

Category #1 :

One-on-One

Category #2 :

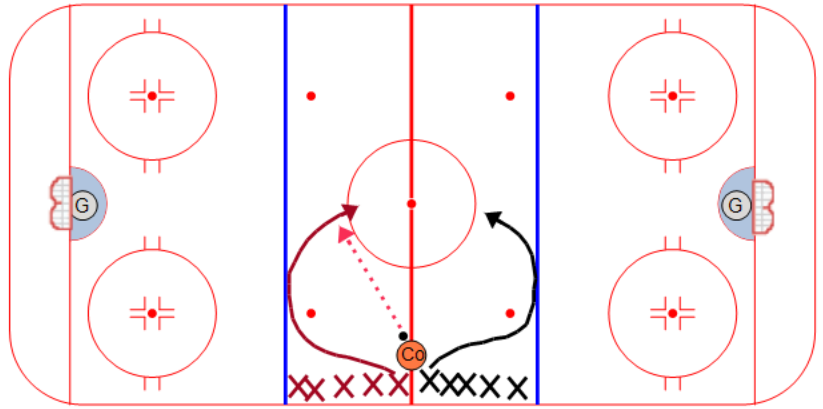
Angling

Description

Players line up on both sides of the red line.
On the whistle top player from each line must skate out and touch the blue line.

Coach passes to either player and they play 1 on 1.

Player without the puck must work on proper angle positioning.



Key points :