

Title : Dump-in to 2x1 with Point S

Category #1 :

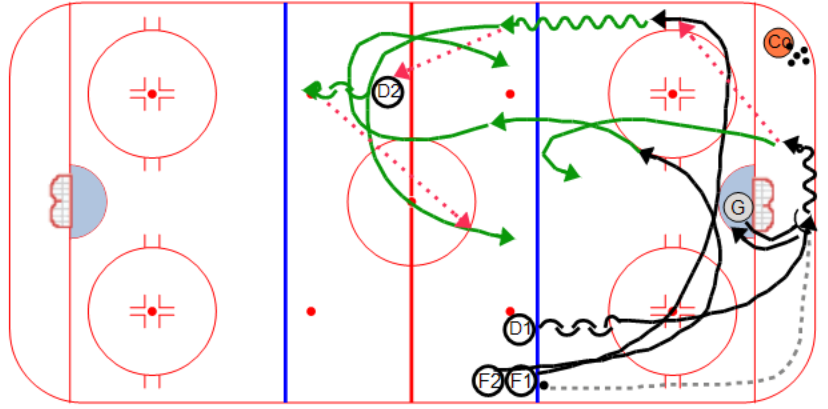
Campanale

Category #2 :

Offensive Tactics

**Description**

F1 dumps the puck in behind the net.  
Goalie stops the dump and set-up the puck for D1.  
F1 skates low and outside while F2 supports the middle lane.  
D1 passes to either F1 or F2. F2 should be yelling to D1 "Middle" or "Wall" to let him know where to pass the puck.  
F1 and F2 skate up ice and regroup with D2 while D1 gaps up on the regroup rush.  
Play back to the net 2 on 1.  
D2 follows up hard to the blue line.



Key points :

Four empty rectangular boxes for key points.

Title : Dump-in to 2x1 with Point S

Category #1 :

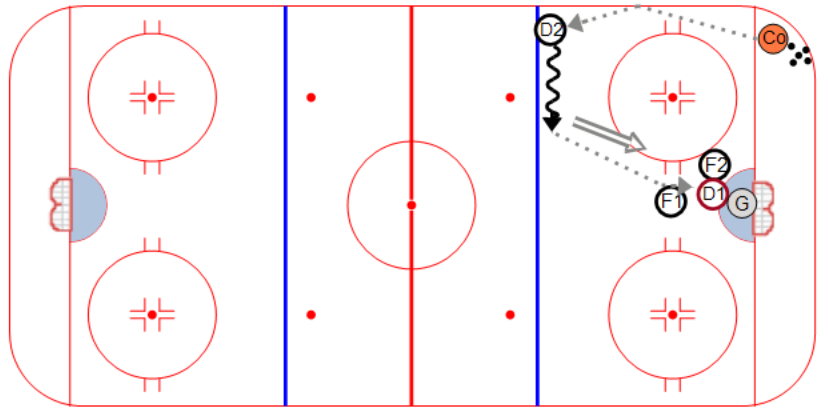
Campanale

Category #2 :

Offensive Tactics

**Description**

Coach passes the puck to D2 at the blue line  
F1 takes the high slot and F2 screens the front of the net.  
D2 can shoot at the net for a screen/deflection by F2 or make a shot pass at F1 for a high slot redirect.



Key points :

Four empty rectangular boxes for key points.