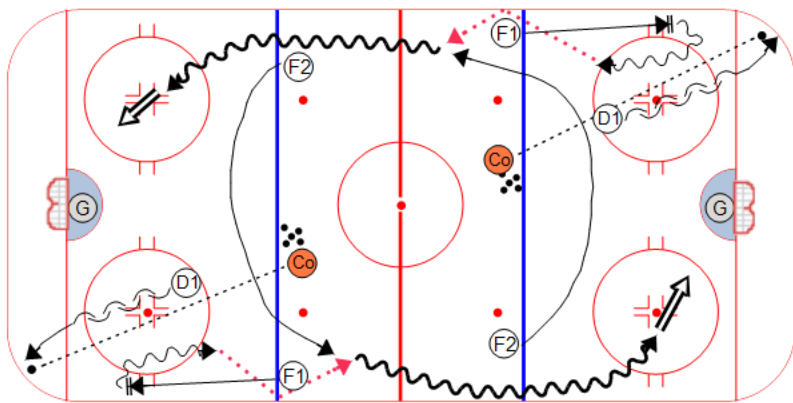


**Description**

Run from both ends of the ice.  
Coach dumps a puck into the corner  
D1 back skates and transitions into the puck to make a pass.  
F1 comes down the wall to breakout position.  
D1 hits F1 with a good tape-to-tape breakout pass.  
F1 skates with the puck and chips a pass off the wall to F2 who is breaking through the top of the zone with speed.  
You can the coach pressure F1 so they have to make a good chip pass.  
You can also have D1 cut across the ice to play 1-on-1



**Key Points :**