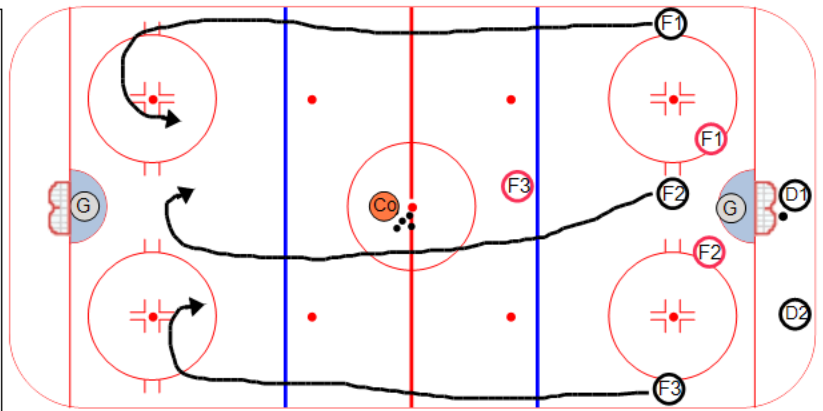


**Description**

Drill starts as a 5 man breakout against F1 & F2 as forecheckers.  
 F3 must stay above the blue line until the puck crosses the goal line.  
 Once the puck crosses the goal line F3 can attack as the 3rd forechecker.  
 Once the puck clears the blue line then F1, F2 & F3 attack the goalie 3 on 0 and can take only one shot.  
 5 new players step out to work the breakout.  
 Once (Black) take their one shot they become new forecheckers and coach dumps a puck in.



Key points :