

Title : 2 Man Drive Passing to 1x0 Content elements: _____

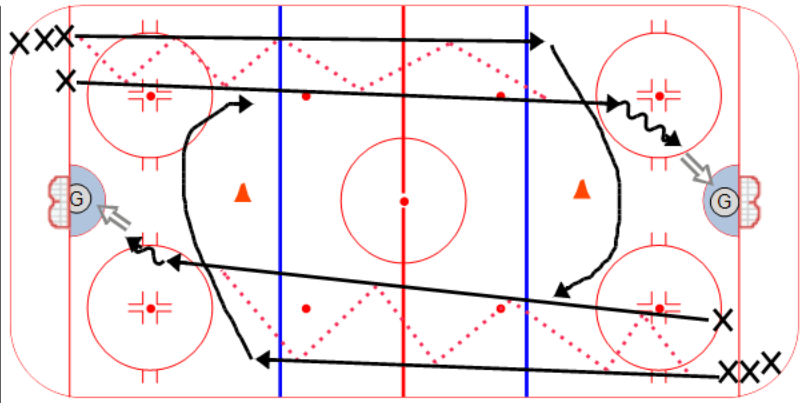
Components : _____

Description

Drill starts with two players at the goal line and after that the outside skater from the opposite line becomes the inside skater on the other end.

Pass the puck back and forth until the far blue line. At the blue line the inside skater takes the puck in for a shot while the outside skater cuts around the cone and comes back down the ice with a new partner.

After the inside shooter takes his shot go to the back of the line.



Key Points :