

Title : Swing the Net

Content elements: _____

Components : _____

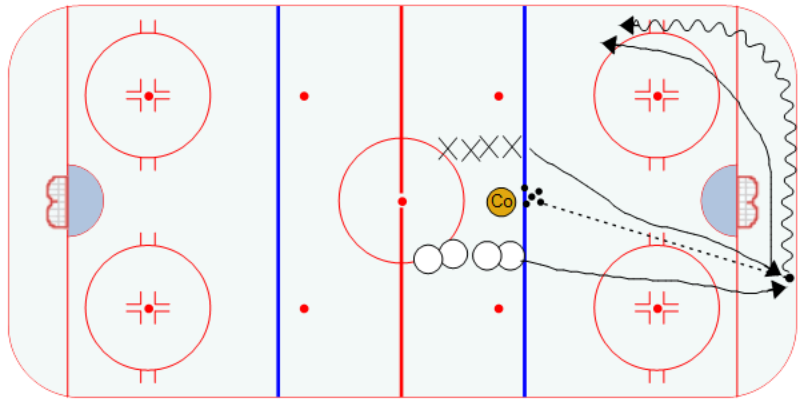
Description

Two Lines

Coach dumps puck to either side of the net
Player that gains possession must carry behind the net
and then cross the opposite blue line before he loses
possession.

If the defensive player steals the puck, he must skate
back behind and around the net and up the other side
and cross the BL before losing possession.

Game continues until one player carries the puck over
the BL.



Key Points :