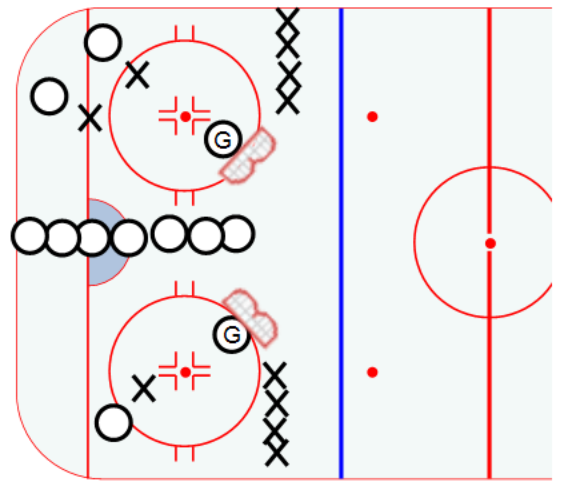


Description

Move the nets to the top of the circles.
Line up players as shown.
On one side you play 2x2 and the other side is 1x1.
Have players alternate playing on both sides.
On the whistle new players come in to the playing area.
Have them battle for 15 to 20 seconds.



Key points:

<input type="text"/>	<input type="text"/>
<input type="text"/>	<input type="text"/>