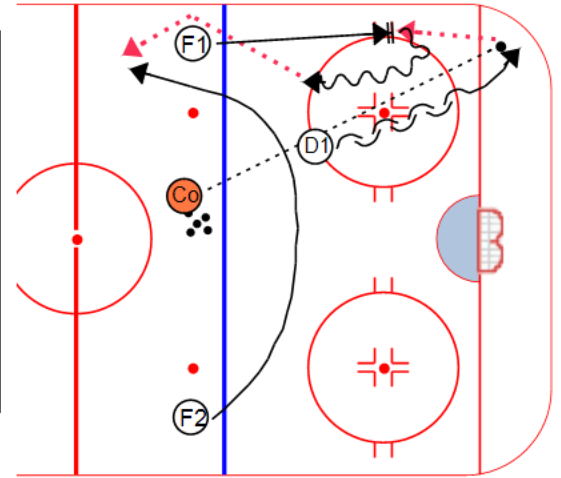


Description

Coach dumps a puck into the corner
D1 back skates and transitions into the puck to make a pass.
F1 comes down the wall to breakout position.
D1 hits F1 with a good tape-to-tape breakout pass.
F1 skates with the puck and chips a pass off the wall to F2 who is breaking through the top of the zone with speed.

You can have the coach pressure F1 so they have to make a good chip pass.



Key points:

<input type="text"/>	<input type="text"/>
<input type="text"/>	<input type="text"/>