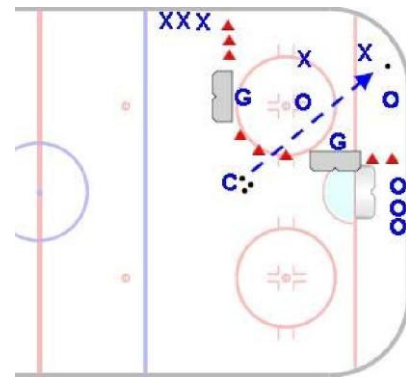
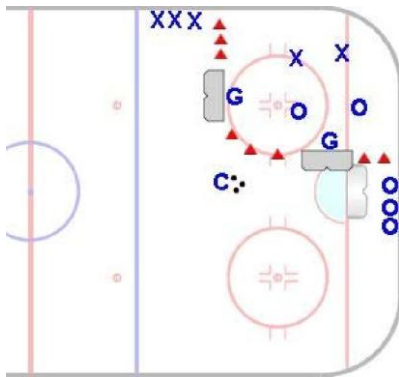


# Tight Area 2 on 2

All Ages

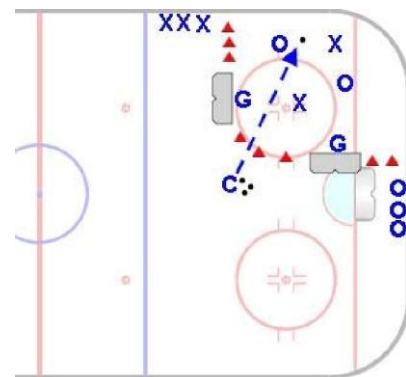
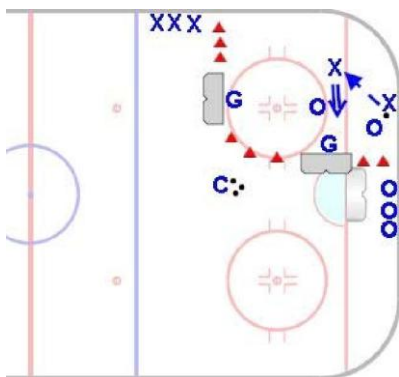
**Goal:** To simulate game situations in which players must operate in extremely tight areas and create plays out of the corner. Also forces players to release shots quickly while under pressure.

**Time:** 8 to 10 minutes      **Shifts:** 25 to 40 seconds



- One net is placed at the top of the face-off circle; the other net is placed on the outside of the circle just above the goal line.
- Teams start from boards as illustrated.
- Puck cannot cross border created by cones.

- Game begins with two members from each team entering play. Coach shoots puck in.
- Coach must keep eyes open for flying or deflected pucks.



- Players engage in a two on two game.
- Puck support is a key.
- Players must constantly move and position themselves to receive passes and create scoring opportunities.

- Pucks will frequently leave the area of play. When this happens, coach will call "new puck" and send a puck in.
- Players will be forced to switch quickly between offense and defense .