

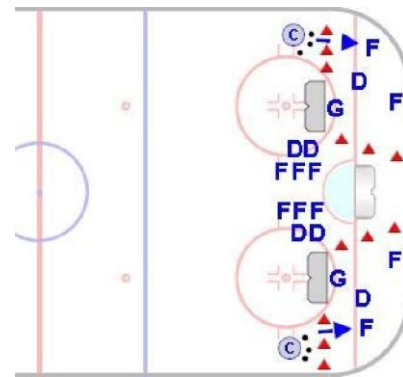
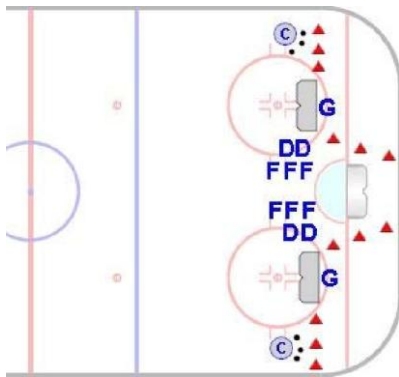
Tight Area 2 on 1

Squirt & Older

Goal: To simulate a game-like situation in which players work a 2 on 1 in a very tight area.

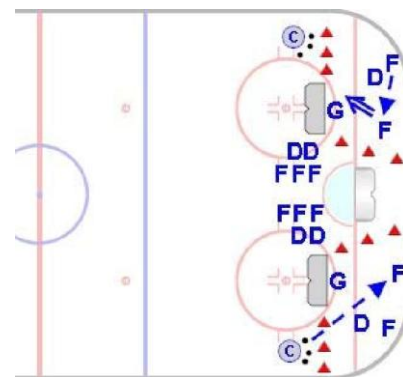
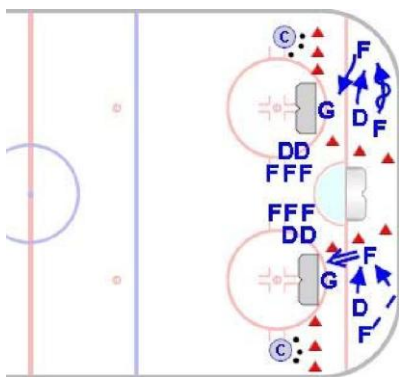
Time: 6 to 10 minutes

Shifts: 25 to 35 seconds



- Play takes place in both corners.
- Nets are placed just inside the face-off circles facing the corners.
- Cones are placed as illustrated to indicate the area of play.

- Forwards and defensemen are placed in lines as illustrated.
- Two forwards and one defenseman position themselves in the corners and coaches pass the puck to one of the forwards to start play.



- Coaches need to be aware of flying pucks. It is possible to be hit with a shot or deflection.
- Players work a 2 on 1 in the corner. Forwards are trying to create and convert as many scoring chances as possible.

- With every puck that goes out of play, the coach will pass a puck in to one of the forwards.
- Defensemen attempt to clear the puck or redirect it out of play.