

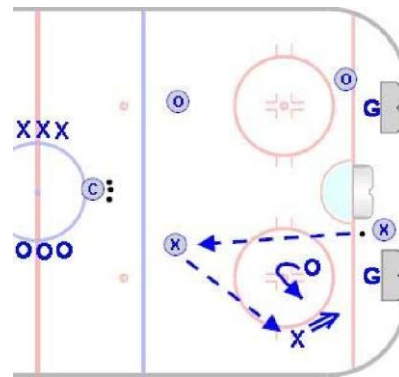
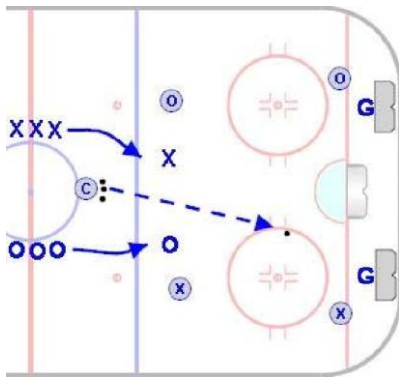
Three Zone 3 on 3

Pee Wee & Older

Goal: To create passing, shooting and scoring opportunities from various spots on the ice. This game is commonly used to simulate power play situations.

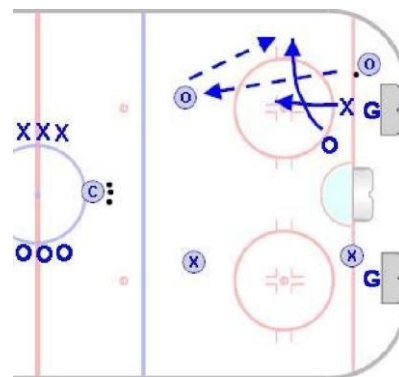
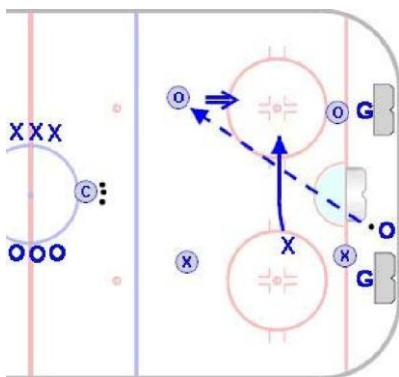
Time: 8 to 12 minutes

Shifts: 30 to 45 seconds



- Nets are placed against the end boards in line with the face-off circles.
- Three players from each team enter play. One player from each team is restricted to an area below the face-off circle and inside mid-ice.

- The other support players are confined to an area above the top of the face-off circles and inside mid-ice.
- The third player for each team can travel anywhere inside the blue line.



- Since both support players are confined to their offensive side of the ice, 3 on 1 situations are created.
- Support players are allowed to shoot and may pass the puck to one another.

- The 3 on 1 situation allows teams to practice various power play situations, especially if the team favors an overload.
- Goaltenders should be active in attempting to cover or clear the puck.