

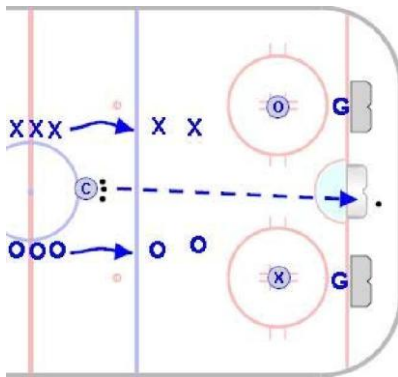
On The Dots 3 on 2

Squirt & Older

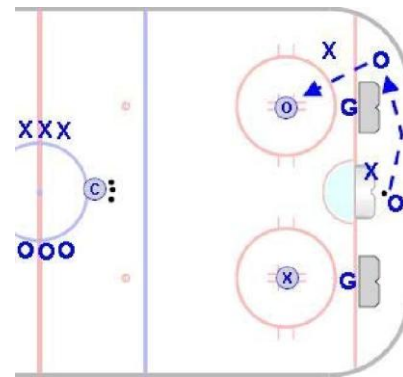
Goal: To simulate a game situation in which players are operating with a 3 on 2 advantage in a small area.

Time: 8 to 10 minutes

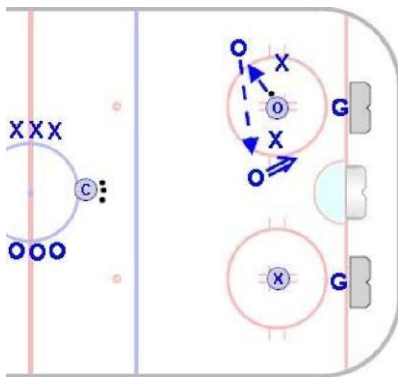
Shifts: 30 to 45 seconds



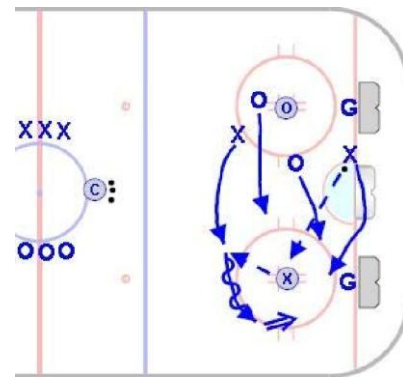
- Nets are placed on the goal line and in line with the face-off dot.
- One player from each team goes to the face-off dot opposite their line. They are “on the dot” and are not allowed to leave the dot.



- Two additional players from each team enter play and are allowed to skate freely.
- Players should use the player on the dot as a passing station to create give-and-go opportunities.



- Defensive players are not allowed to attack or defend the players on the dots.
- Players on the dots are not allowed to shoot the puck. As a progression of the game, coaches can choose to allow one-timers.



- Players are not required to use the player on the dot, but are encouraged to use them.
- Players on the dot can pass to either teammate, they are not required to return the puck to the player they received the pass from.