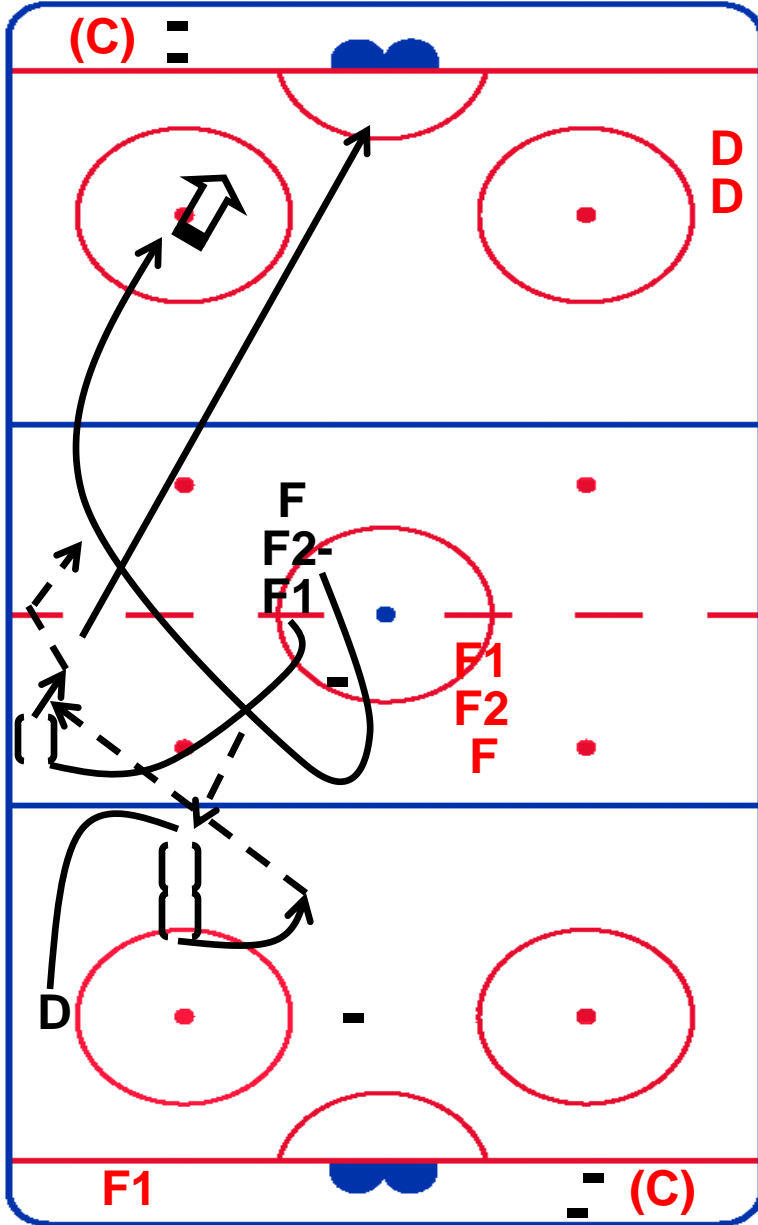


# JOHNSON DRILL



On the whistle D skates forward to the blue line and pivots to skate backward. F1 hits him with a pass and the D pulls the puck back to the top of the circle and then moves laterally to the middle of the ice. F1 posts up and receives a return pass from the D. F1 steps off the boards and hits F2 slashing through with an indirect chip. F2 goes in for a shot with F1 driving the net. D follows up to the blue line, receives a pass from the coach and drags the puck to the middle for a point shot with screen. Emphasis on D skating, surrounding the puck, and hard forehand pass. Forwards good support and proper timing.