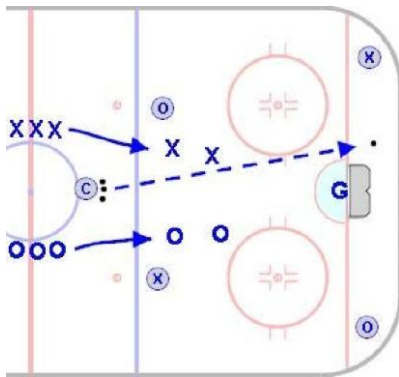


# Four Corners 2 on 2

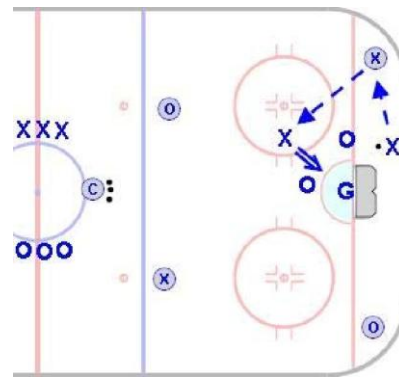
## Squirt & Older

**Goal:** To simulate a game situation in which players make a pass to the offensive corner or point and receive a return pass, leading to a shot on net.

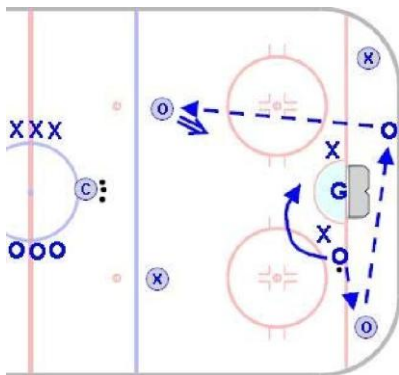
**Time:** 8 to 12 minutes      **Shifts:** 30 to 40 seconds



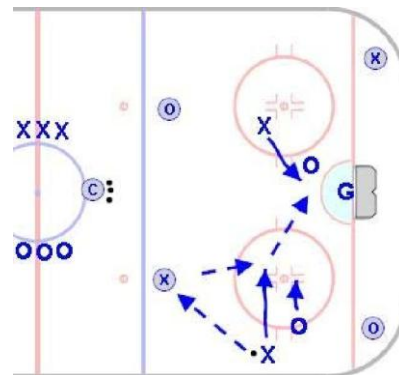
- One net is placed in the traditional position.
- Four support players are placed in the zone as shown in the diagram.
- To begin, the coach dumps the puck in and two players from each team enter play.



- Players play a 2 on 2 game with the option of using their designated support players.
- Support players are not allowed to pass to one another.



- Coach has the option of allowing the support players at the point to shoot the puck.
- Players should be encouraged to use the area behind the net and use the corner support to create give and go opportunities.



- All rebounds are live for either team to play. The goaltender should cover rebounds quickly.
- The coach has the option of requiring a pass to a support player before attempting a shot.