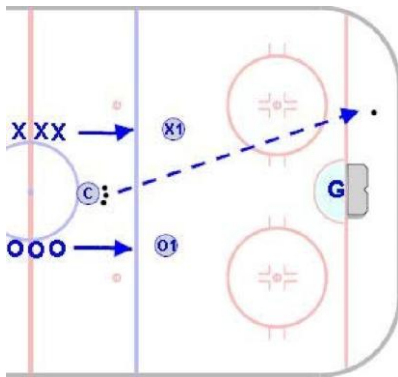


Even/Odd 1-2-3

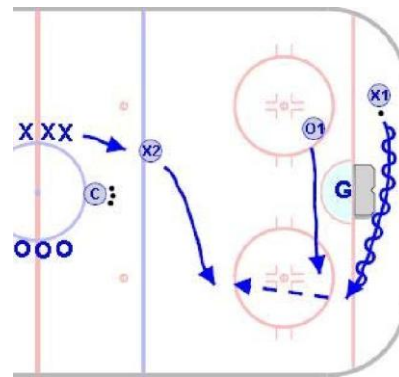
Pee Wee & Above

Goal: To create a competitive game which provides a variety of small-area odd and even man situations.

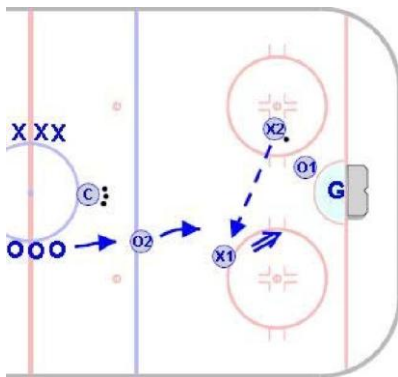
Time: 8 to 12 minutes **Shifts:** N/A



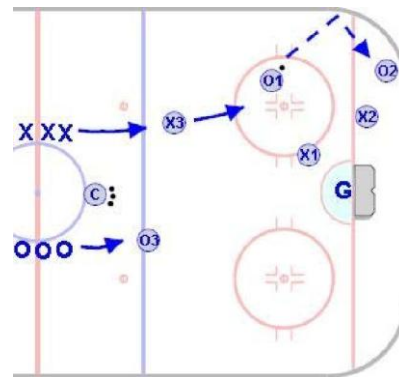
- One net is placed in the traditional position.
- Play begins when the coach dumps the puck in. One player from each team enters play.
- Players begin by playing a 1 on 1 game.



- Players play a 1 on 1 game for 10 seconds.
- After the initial 10 seconds, a player is added from one of the teams to create a 2 on 1 situation.



- After 5 seconds, a player from the other team will enter play to create a 2 on 2 .
- All rebounds are live and can be played by either team.



- New players are added every 5 seconds until the game is a 3 on 3. Finish the drill by playing 3 on 3 for 10 seconds. The entire drill will last for 40 seconds.