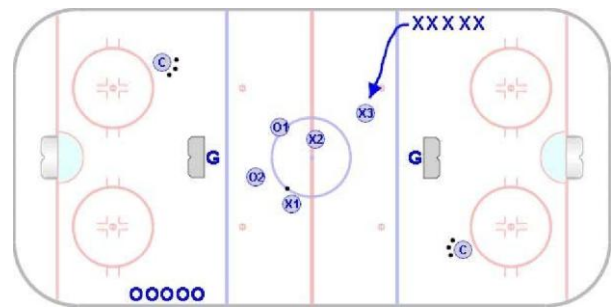
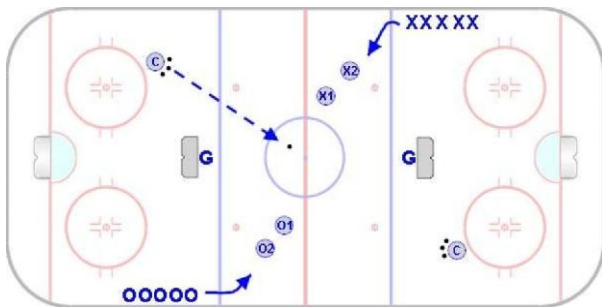


Continuous Mid-Ice 3 on 2

Pee Wee & Older

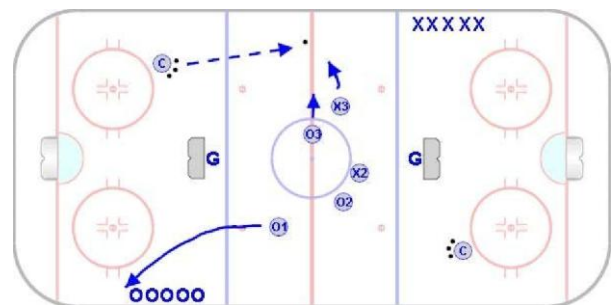
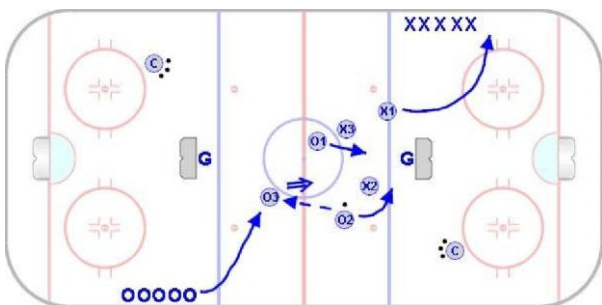
Goal: To simulate a game situation in which players participate in continuous 3 on 2 offensive and defensive situations in a small area as part of a constantly changing, fast paced game.

Time: 6 to 10 Minutes **Shifts:** N/A



- Nets are placed a few feet inside the blue lines.
- Teams are lined up just inside each blue line on opposite sides of the ice.
- Coaches are stationed opposite the player lines as illustrated above.

- Coach puts puck into play to begin game.
- Two players from each team enter the play.
- The team which gains control of the puck adds a player from its line to create a 3 on 2 situation.



- When the offensive team loses the puck, their first player must leave the play and return to the end of their line.
- Upon forcing the turnover and taking control of the puck, the new offensive team will add a player to create a 3 on 2.

- If a goal is scored or the puck crosses the imaginary goal lines and possession is lost, the coach on the opposite side of the ice puts a new puck into play.
- In a situation requiring a new puck, the game reverts to a 2 on 2.