

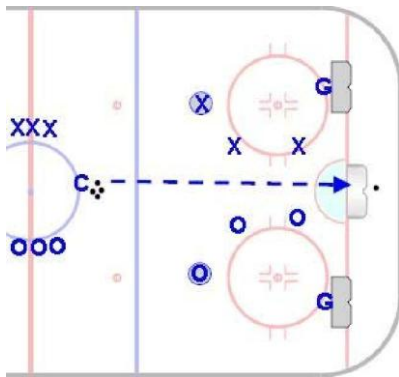
Bruin 3 on 2

Pee Wee & Older

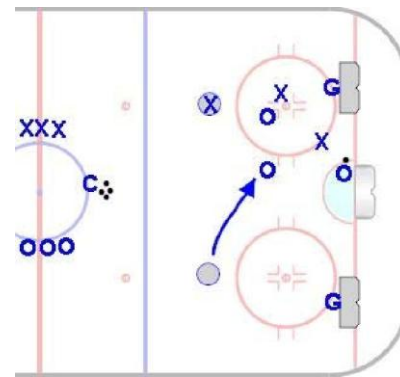
Goal: To simulate a game situation in which players must attack with, and defend against, a 3 on 2 in a small area close to the net.

Time: 8 to 10 minutes

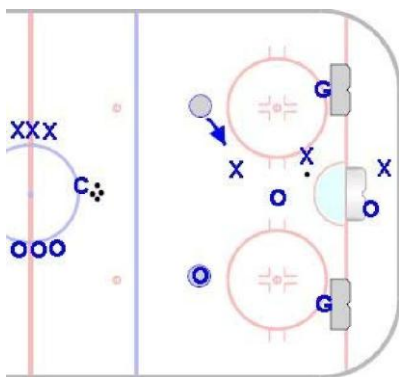
Shifts: 30 to 40 seconds



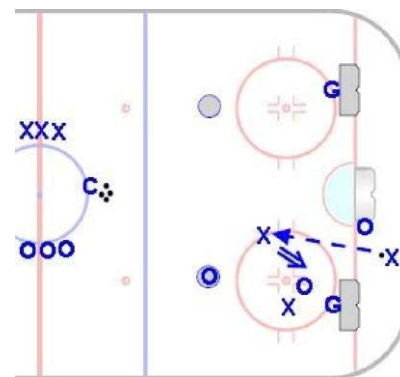
- Nets are placed just inside the goal line with the inside pipe in line with the face-off dot.
- One player from each team is in a stationary position just above the face-off circle nearest their team's line.



- Coach dumps the puck in and two players from each team enter play.
- Stationary player is allowed to enter play when his/her team controls the puck. This creates an instant 3 on 2 situation.



- When the puck is turned over, the stationary player must return to his/her position above the face-off circle.
- The stationary player for the new offensive team now enters the play.



- The position of the net creates extra room behind the net. Encourage players to use it.
- While players are allowed to take the puck as far as the blue line, the majority of play will take place below the top of the circles.