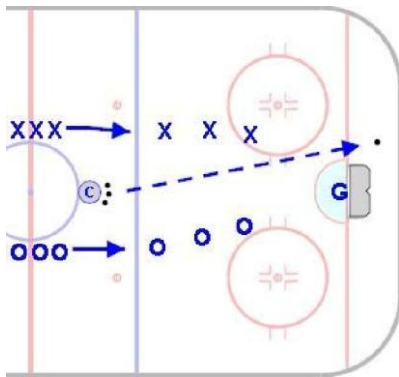


# 3 on 3 Circle Shooter

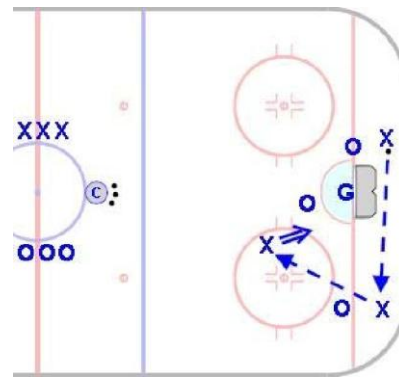
## Squirt & Older

**Goal:** To create a competitive situation in which players must work the puck into a small, specific area (their designated circle) to create a shot.

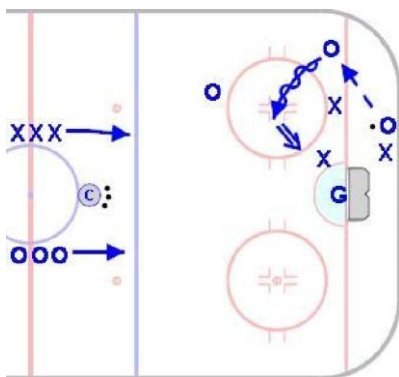
**Time:** 8 to 10 minutes      **Shifts:** 25 to 40 seconds



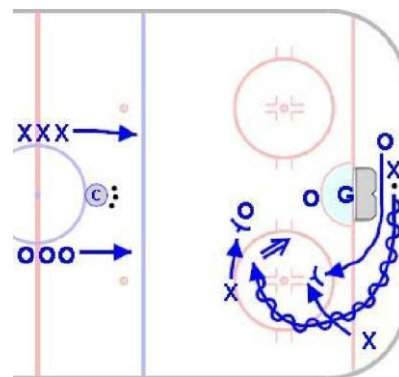
- One net placed in the traditional position.
- Play begins when coach dumps puck in and three players from each team enter play.



- Players are only allowed to shoot from inside the face-off circle opposite their line.
- Players will either skate the puck or pass it to open teammates in a position to enter their circle and attempt a shot.



- Offensive team will be able to overcome a passive defense by skating the puck into a shooting position within the circle.
- Players should work to use the offensive corner effectively.



- Rebounds are not live. Players must work the puck back to the circle to shoot again.
- Teammates should create legal interference and block out opponents to create time and space for the puck carrier.