

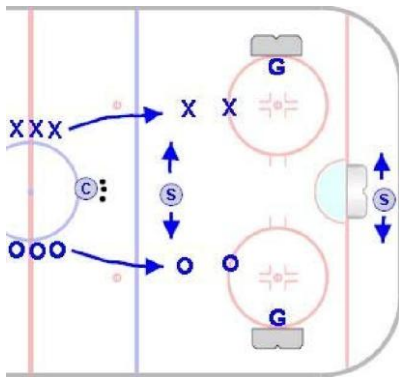
2 on 2 Double Support

Squirt & Older

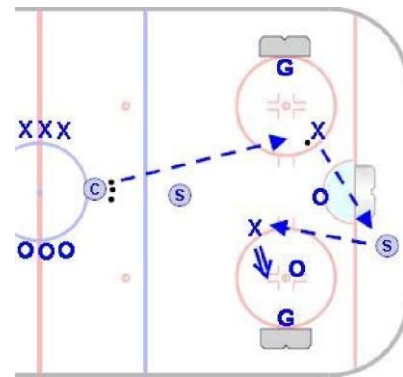
Goal: To simulate a game situation which gives players the ability to create give-and-go passing and odd-man offensive and power play-like opportunities.

Time: 8 to 10 minutes

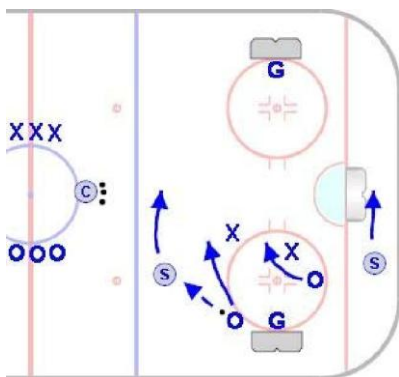
Shifts: 30 to 45 seconds



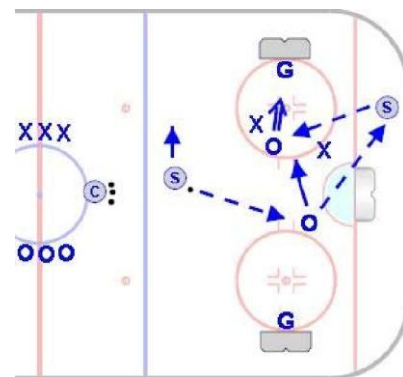
- Nets are placed on the face-off circles.
- Two support players are placed in the zone. One support player stays below the goal line and one remains above the top of the face-off circles. They cannot pass these boundaries.



- Two players from each team enter the zone.
- Coach begins play by passing to one team.
- Both support players are on offense and play for the team in control of the puck. This will create a 4 on 2 situation for the offense.



- With every turnover, the support players will change teams and remain on offense.
- Support players are not allowed to pass cross-ice to one another.



- Coaches have the option of requiring a pass to one or both support players before a shot on net is attempted.