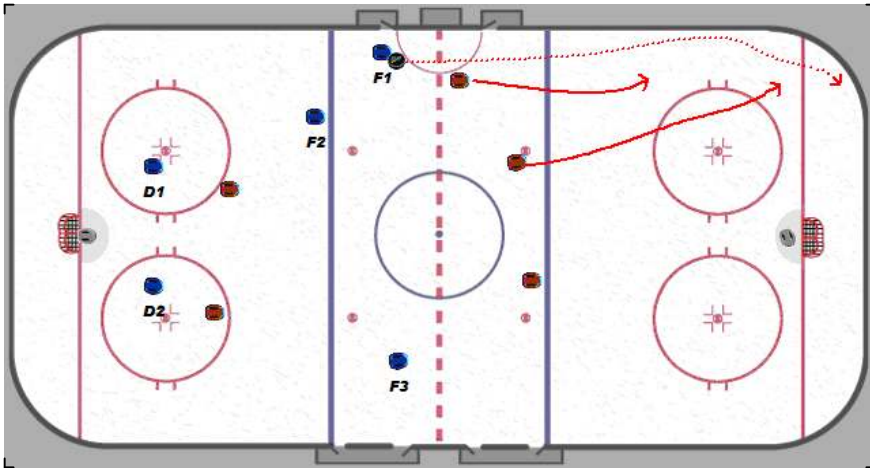
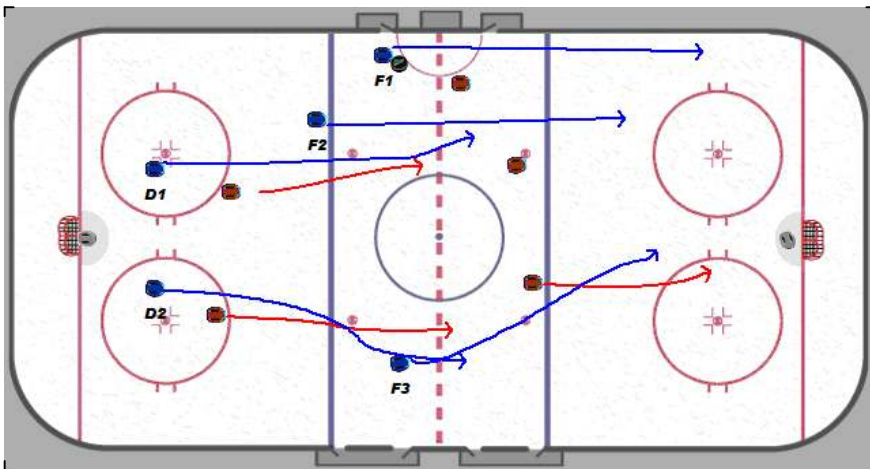


Nielsen_Playbook

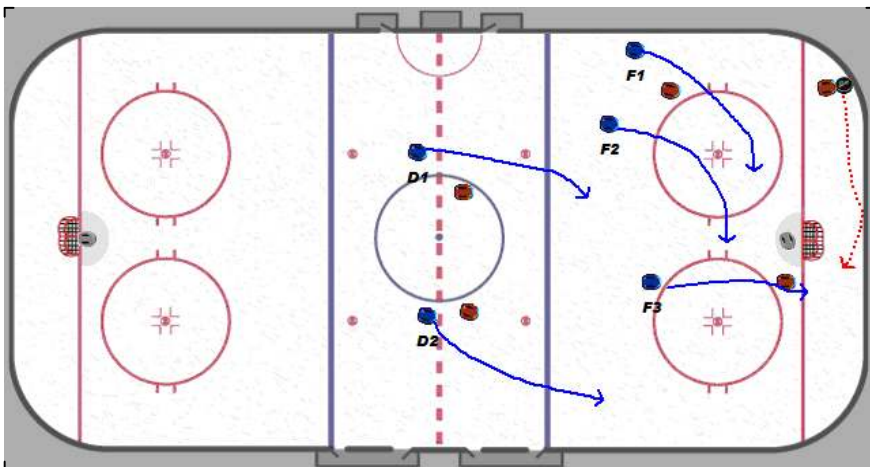
1-2-2 Offensive Zone D2D Pass



Under pressure we dump the puck and try to be aggressive on the forecheck.



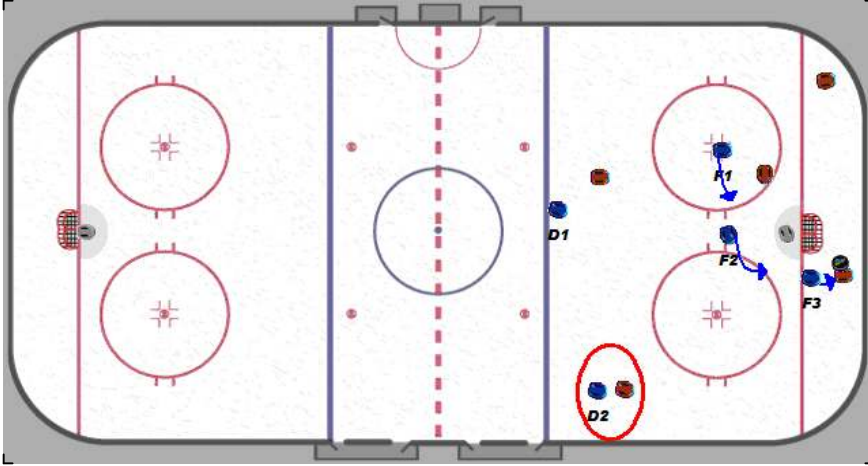
Everyone attacks the puck in the standard 1-2-2 forecheck formation.



If the defenseman goes D2D, F3 needs to read that play and attack the defenseman receiving the pass. F1 & F2 alter their forecheck to go to the receiving side of the ice.

Nielsen_Playbook

1-2-2 Offensive Zone D2D Pass



F3 puts hard pressure on the defenseman and attempts to make him make a bad pass because of body contact or hard pressure. F1 & F2 are in position to pick up loose pucks. D2 needs to cover the wing if he is up high to take away the pass.