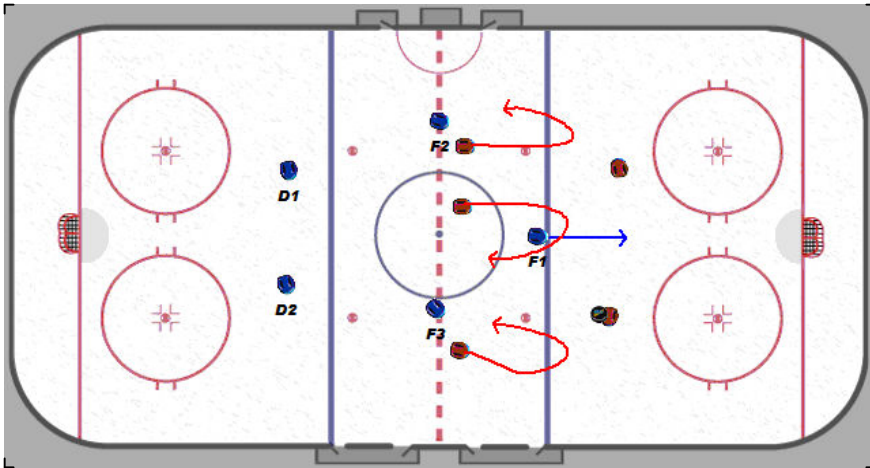
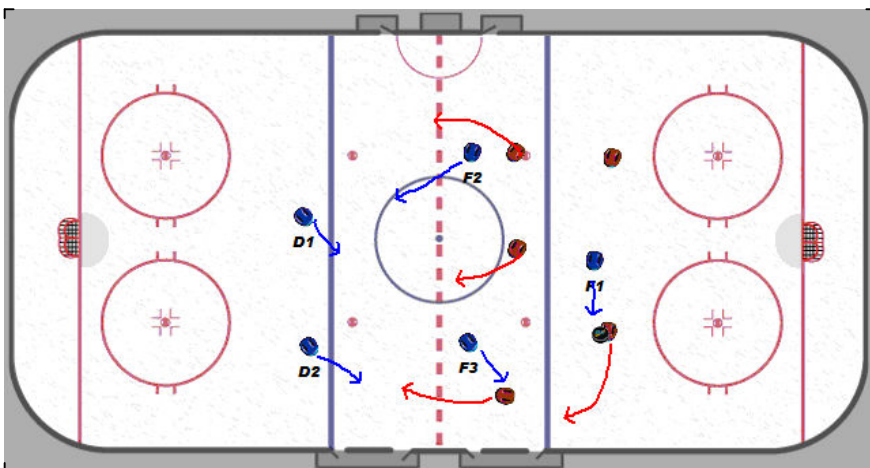


Nielsen_Playbook

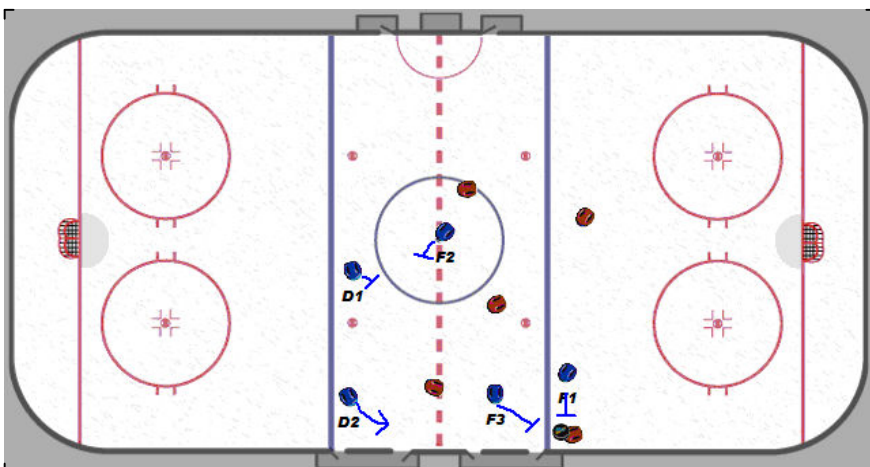
1-2-2 Neutral Zone Press



F1 drives forward aggressively to take away the D2D passing lane.



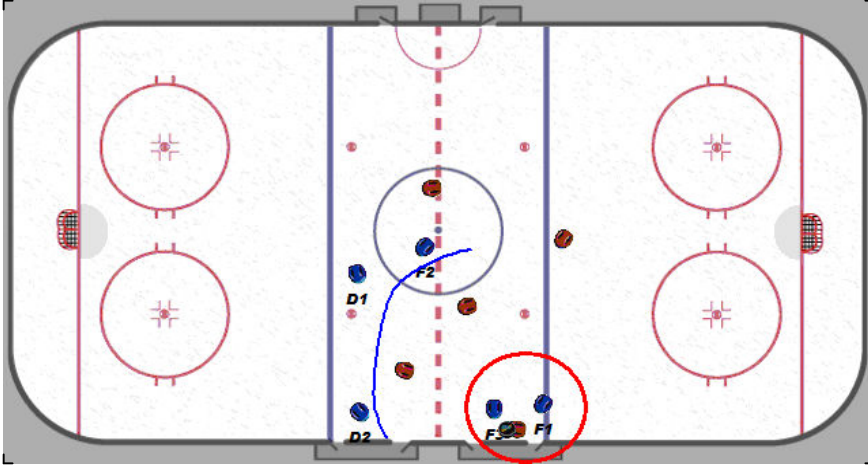
With the passing lane taken away, F1 now forces the puck carrier to the wall. F3 keeps his stick in the passing lane to block pass to the middle forward. F2 takes away the backside passing lane. D2 moves up to take away the board pass.



F1 & F3 converge on the puck carrier to force him to dump the puck. We should put a body on him if he holds the puck for too long, and we should finish the check if he dumps the puck.

Nielsen_Playbook

1-2-2 Neutral Zone Press



With F2 guarding the middle of the ice and D1 & D2 in good support position we should be able to control where the oncoming forwards even if they receive a pass from the puck carrier.